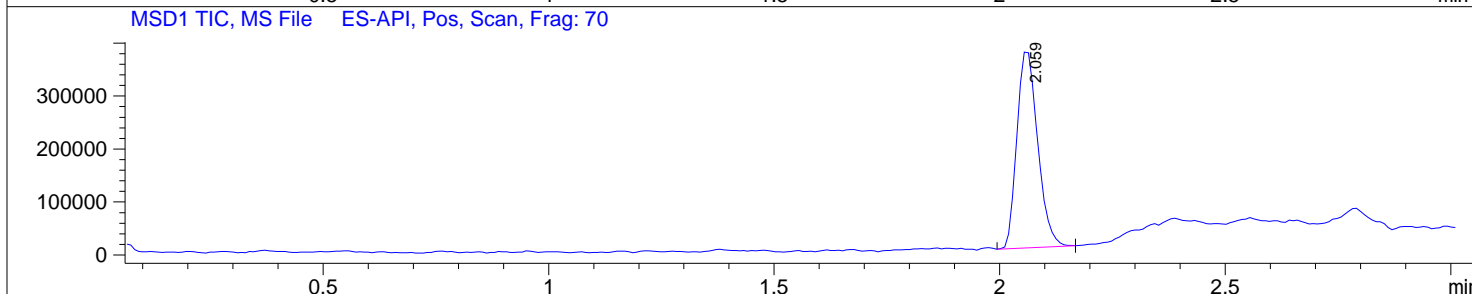
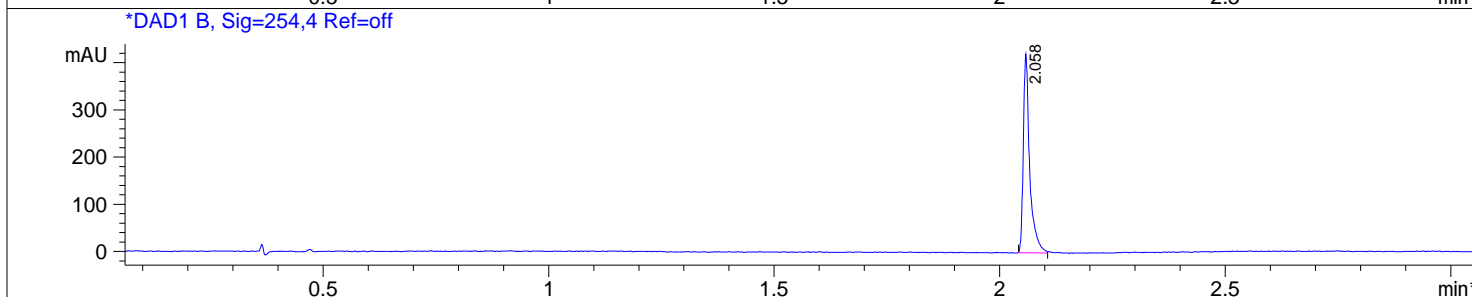
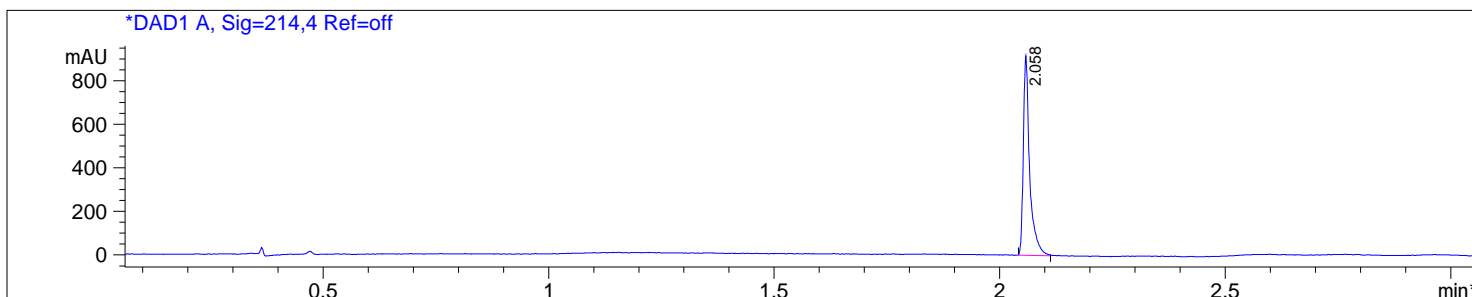


Injection Date : 25 Apr 19
 Sample Name : PC-6158901
 Method Info : column:SUNFIRE C18 (4.6x 50 mm, 3.5um)
 Mobile phase: H2O(0.01%TFA) (A) / ACN(0.01%TFA)(B)
 Elution program: Gradient from 5 to 95% of B in 1.3min at 2.0ml/min
 Temperature: 50 °C
 Detection: UV (214 , 4 nm) and MS (ESI, Pos mode ,110 to 1000 amu)



Integration Results for DAD1 A, Sig=214,4 Ref=off

RetTim	Width	Area	Height	Area%
2.06	0.01	900.05	914.22	100.00

Integration Results for DAD1 B, Sig=254,4 Ref=off

RetTim	Width	Area	Height	Area%
2.06	0.02	415.60	420.14	100.00

Ret. Time: 2.06

<<<< POSITIVE SPECTRA >>>>

